

ReplixFax[®] for Domino



Enterprise Fax Solution for IBM Lotus Notes and Domino Users (Windows and Linux)

Maximize Your Domino Capabilities

ReplixFax for Domino is the right fax messaging solution for IBM Lotus Notes and Domino users. The ReplixFax for Domino solution is tightly integrated with familiar Notes e-mail desktop and Domino Directory extending Domino messaging capabilities to provide an easy-to-use desktop faxing as well as application faxing from within Notes/Domino and other business applications using comprehensive ReplixFax application faxing integration toolkits.

As Easy as Using an E-mail or Print

With ReplixFax for Domino, sending and receiving a fax is as easy as sending and receiving an e-mail or printing a file from your Notes desktop. Fax addressing is fully integrated with Domino Directory or your Personal Address Book. To send a fax simply compose an e-mail message, attach any Microsoft Office or Lotus SmartSuite file, and click to send. The ReplixFax Print2Fax driver also allows you to send faxes by printing a file from within any desktop application, which will automatically launch Notes fax memo form. Incoming faxes are delivered directly into the user's e-mail inbox in either TIF or PDF format as an e-mail attachment just like an e-mail message along with fax information details. Faxing from Lotus Notes has never been easier.

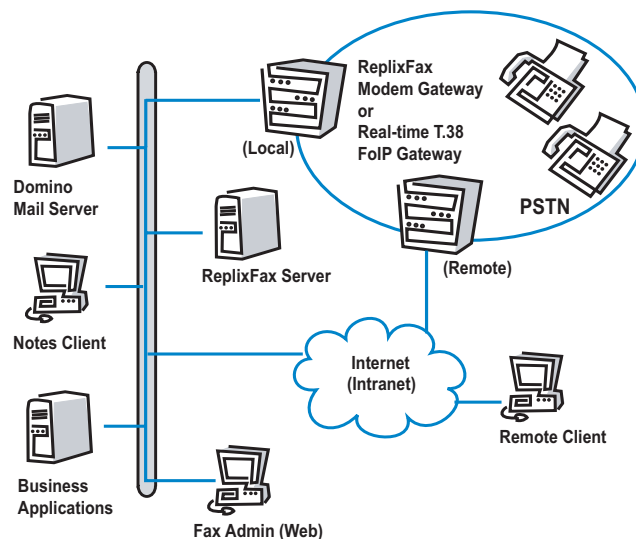
Domino and Business Application Faxing Made Simple

You can easily fax-enable any Domino, Windows, Java or Legacy business application to automate document delivery via fax by using the following ReplixFax APIs and fax integration tools:

- Web Services Fax API
- Windows Fax API
- Java Fax API
- Formula language @function or LotusScript command
- Pre- and Post-filters to easily plug in external programs or scripts that will run upon fax events for ad-hoc fax workflow processing

Features and Capabilities

- Faxes sent from Notes e-mail—both from the Notes and Web clients, and received into e-mail inbox as an attachment or embedded fax image
- Synchronization with Domino Directory
- Domino Address Book integration – use fax number field in “Person document” to specify fax destination
- Fax from Notes applications using doc.Send or



@MailSend

- Real-time fax status monitoring via Web
- Fax status notifications via e-mail
- Fax data managed in a relational database
- Delivery options include delayed sending, priority, multiple retry attempts, fax page orientation, custom cover pages and billing codes
- Full fidelity of all supported document types including Notes documents
- Server-based rasterization for native file attachments of most file types
- Print-to-fax support for fax file conversion from any Windows application and auto-launch of the fax client
- Delivery notification delegation
- Group multiple faxes to the same fax number
- Global-phone number dialing rule support
- Retransmission of failed-only fax pages
- Least Cost Routing over private IP network or



Visit us online at
www.softlinx.com
100 Riverpark Drive
North Reading, MA 01864
USA
Phone: +1.978.881.0560
Fax: +1.978.664.0181

the Internet

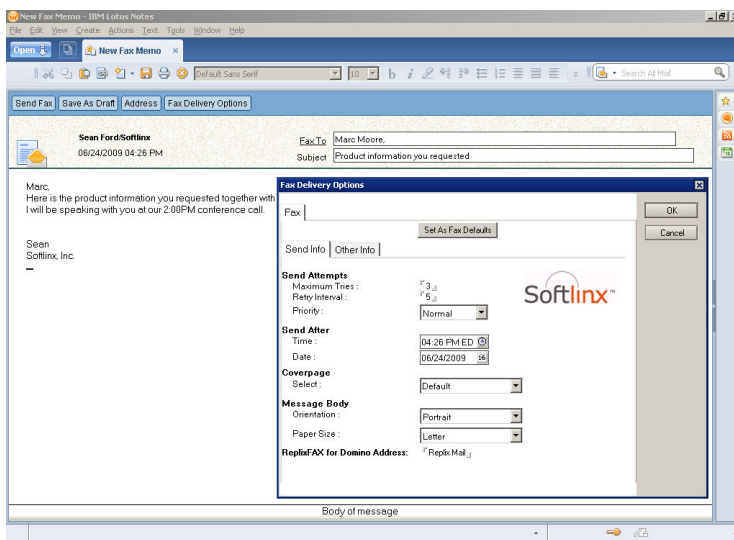
- Inbound routing support via DID, DTMF, DNIS, CSID, ANI, Fax Port, Network Printer or Manual Routing
- Accounting and charge-back billing support
- Detailed logging and multi-server billing support via detailed Call Data Record (CDR)
- Real-time T.38 Fax over IP support
- Full support of global PSTN connectivity including analog, digital T1/E1 and ISDN

Ease of Deployment and Administration

The ReplixFax for Domino provides automated fax user creation capability to make a large scale deployment an easy task for administrators. Using the Domino Directory, a valid fax user account entry is automatically created upon successful verification of the user when the user sends a fax for the first time. Administrators can readily check the status of in- and outbound faxes and manage user accounts, server configurations, and modem line connections from any location on the network.

ReplixFax for Domino technical specifications

• IBM Lotus Domino Servers	IBM Lotus Domino 8, 9 on any platform (Windows, Unix, AS/400)
• IBM Lotus Notes Clients	IBM Lotus Notes 8, 9 and iNotes (Domino Web Access)
• Other Clients	Any SMTP e-mail client
• Fax Server Platform	Microsoft Windows 2008, 2012 (64 bit)
• Intelligent Modem Gateway (IMG) Platform	Microsoft Windows 2008, 2012 (64 bit)
• Fax Boards and FoIP Software	Dialogic® Brooktrout® Analog and Digital T1, E1 and ISDN fax cards, SR140 FoIP software
• Telephone Network	Analog, Digital T1, E1, ISDN
• IP Fax Support	Real-time T.38 Fax over IP, Store-and-forward T.37 Email to Fax, IP Least Cost Routing
• Inbound routing	DID, DTMF, DNIS, CSID, ANI, Fax Port, Network Printer or Manual Routing
• Server-based rasterization for native file attachments	Microsoft Office, Lotus SmartSuite, ASCII text, TIF, PDF, BMP, GIF, JPG, Postscript, HTML



Fax Server Clustering and Virtualization

The ReplixFax system supports high availability through out-of-the-box Fax Server Clustering and Virtual Fax Server through server virtualization. Fax server clustering offers scalability, reliability and performance to serve most demanding business fax communication requirements. Furthermore server virtualization provides efficient server utilization and cost savings.

The Softlinx Solution

Softlinx ReplixFax is an ideal enterprise fax solution to consolidate all of your fax communication needs across multiple office locations, or replace multiple legacy fax servers into a single, centralized Fax over IP (FoIP) system. Softlinx helped many leading organizations worldwide successfully automate their business fax communications and save costs. Softlinx is a leading vendor for mission critical business fax messaging solutions you can depend on.

For more information on ReplixFax for Domino, visit our website at <http://www.softlinx.com>.

Fax Archiving for Compliance

ReplixFax for Domino is integrated with commercial document management systems that provide automated capture, indexing and archiving of inbound/outbound fax documents into the document management system. The archived fax documents can be later searched and retrieved and used to meet any regulatory compliance requirements.

©2015 Softlinx, Inc. All rights reserved. Softlinx and Replix are registered trademarks of Softlinx, Inc. ReplixFax is a trademark of Softlinx, Inc. All other product and company names may be the property and/or trademarks of their respective owners.



Visit us online at
www.softlinx.com
100 Riverpark Drive
North Reading, MA 01864
USA
Phone: +1.978.881.0560
Fax: +1.978.664.0181